

SPEC SHEET – COMPLETE TIER



Unified Multi-Sensor Dashboard



Expanded Nationwide Search



Real-Time Drone & Pilot Tracking



Whitelist & Flag Drones



Flight History & Forensic Playback



Instant & Actionable Alerts



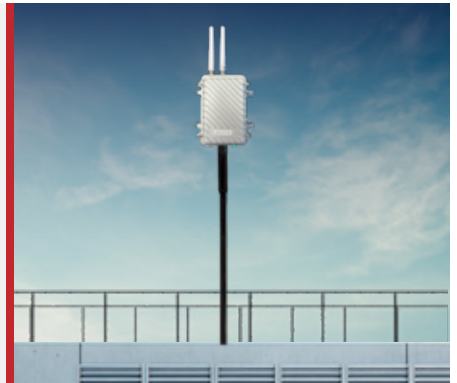
Advanced Analytics & Heatmaps



Easy Integration with Existing Systems

Remote ID Sensor

- ▶ Dimensions: 10 x 6 x 3 in
- ▶ Weight: 3 lb
- ▶ Frequency Bands: 2.4 GHz and 5.8 GHz
- ▶ Power: 120V DC
- ▶ Operating Temp: -4°F to 140°F
- ▶ Ingress Protection Rating: IP67
- ▶ Mount: Wall or pole
- ▶ Connectivity: Ethernet + LTE option
- ▶ Detection Range: Depends on RID strength from drone – 2 to 3 miles
- ▶ Drone Types Detected: All RID drones



RF Sensor

- ▶ Dimensions: 12.52 inches (diameter) x 11.57 inches (height)
- ▶ Weight: 20 lb
- ▶ Frequency Bands: 433 MHz to 5.8 GHz
- ▶ Power: 100V-240V
- ▶ Operating Temperature: -16.6°F to 134.6°F
- ▶ Data: Ethernet uplink
- ▶ Ingress Protection Rating: ≥IP66
- ▶ Mounting: Fixed or tripod
- ▶ Detection Range: 3 to 5 miles
- ▶ Drone Types Detected: DJI, Autel, SwellPro, SkyDio, Limitless, Parrot, ELRS, Crossfire...



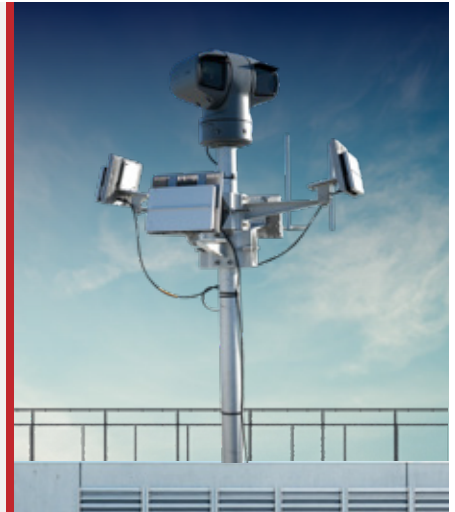
DF Sensor

- ▶ Dimensions: 12.52 inches (diameter) x 11.57 inches (height)
- ▶ Weight: 20 lb
- ▶ Frequency Bands: 433 MHz, 900 MHz, 1.4 GHz, 2.4 GHz, 5.2 GHz, 5.8 GHz
- ▶ Power: 100V ~ 240V
- ▶ Dynamic Range: up to 3 miles
- ▶ Direction Finding Accuracy: (RMS) 3° (hovering), 10° (moving)
- ▶ Operating Temperature: -40°F to 158°F
- ▶ Ingress Protection Rating: IP66
- ▶ Mounting: Fixed or tripod
- ▶ Detection Range: 3 to 5 miles
- ▶ Drone Types Detected: DJI, Autel, SwellPro, SkyDio, Limitless, Parrot, ELRS, Crossfire...
- ▶ Detection Quantity: 35 Drones (Simultaneous)



Radar

- ▶ Dimensions: 8.00 in x 6.42 in x 1.57 in
- ▶ Weight: 2.76 lb
- ▶ Frequency Bands: K-band 24.45 – 24.65 GHz
- ▶ Power: + 15 to + 28 VDC
- ▶ 50 W (Operating)
- ▶ < 10 W (Hot Standby)
- ▶ Direction Finding Accuracy: (RMS) 3° (hovering), 10° (moving)
- ▶ Operating Temperature: -40°F to +167°F
- ▶ Ingress Protection Rating: IP67
- ▶ Mounting: VESA 75 & 100 mm
- ▶ Detection Range: 1,969 feet for small drones (< 12 inch length).
4,921 feet for larger drones (> 12 inch length).
- ▶ Drone Types Detected: All drones larger than 6 inches
- ▶ Max Tracks: Up to 20 Simultaneous Tracks



Camera

- ▶ Casing: IP66-, IP68-, NEMA 4X- and IK10-rated aluminum
- ▶ Casing Color: urban grey NCS S 5502-B
- ▶ Wiper included (silicone wiper blade)
- ▶ Sustainability: PVC free
- ▶ Power: High Power over Ethernet, max 90 W
- ▶ Memory: 1024 MB RAM, 512 MB Flash
- ▶ Storage:
 - Support for SD/SDHC/SDXC card
 - Support for SD card encryption (AES-XTS-Plain64 256bit)
 - Recording to network-attached storage (NAS) For SD card and NAS recommendations
- ▶ Day and night: Automatically removable infrared-cut filter
- ▶ Resolution: 1920x1080 HDTV 1080p to 320x180



CONTACT US

- 📞 1-866-618-2267
- ✉️ Sales@airsight.com
- 🌐 www.airsight.com
- 📍 1202 Richardson Dr., Ste. 304 Dallas, TX

Schedule a Demo

